



NEPRA Resource Management Pvt. Ltd. (NRMPL)

Presentation by:

Sandeep Patel, Founder & CEO, NEPRA

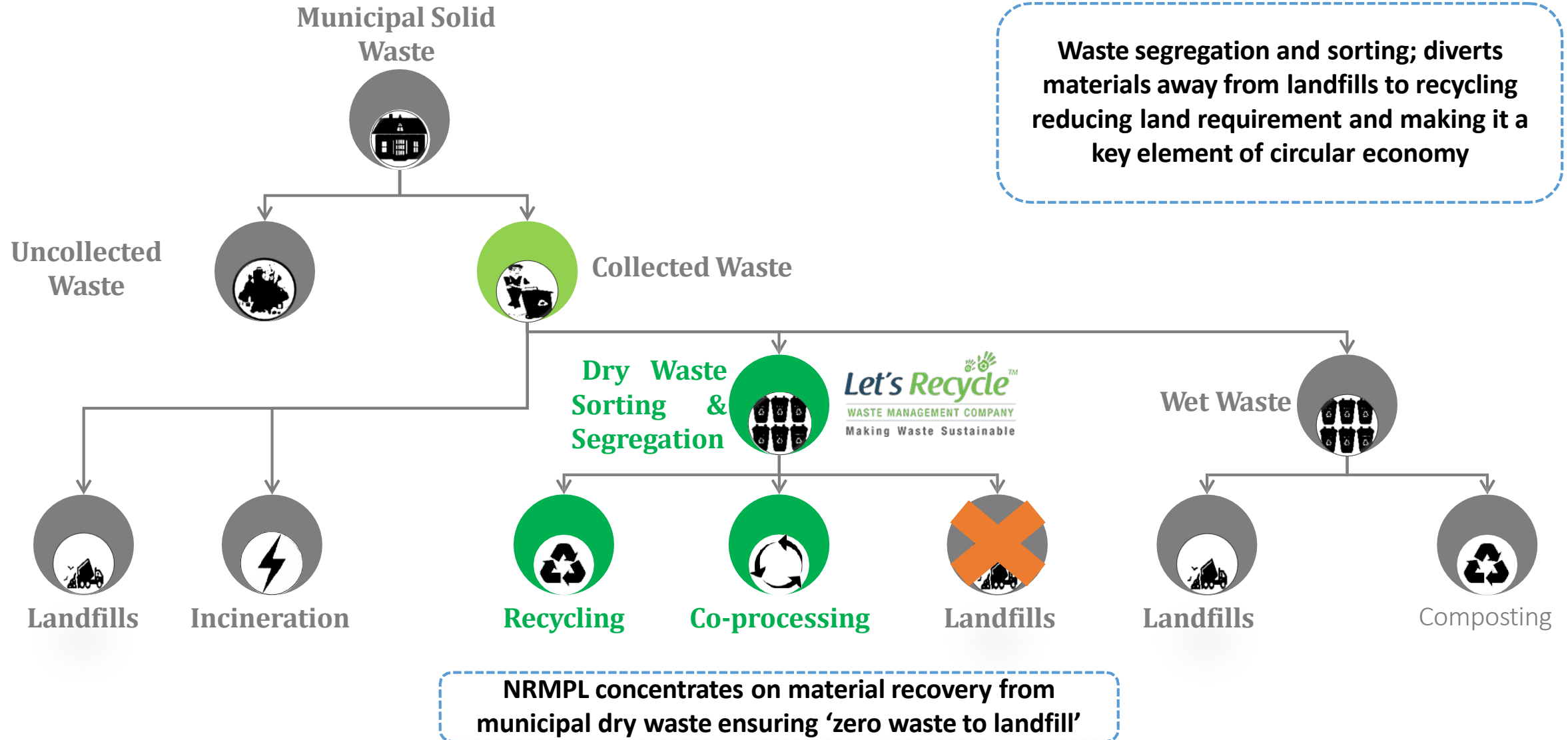
<https://www.linkedin.com/in/sapatel/?originalSubdomain=in>

For NRMPL's brief introduction: https://youtu.be/eqQ_uxIMUuY

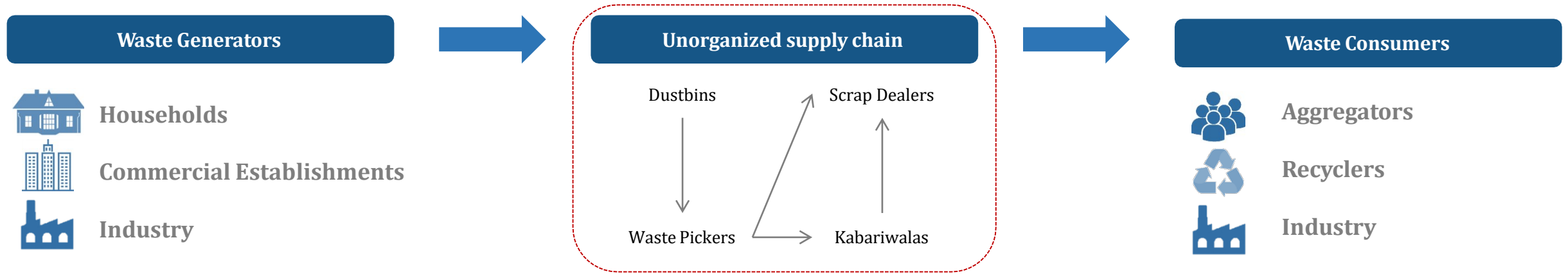


NEPRA

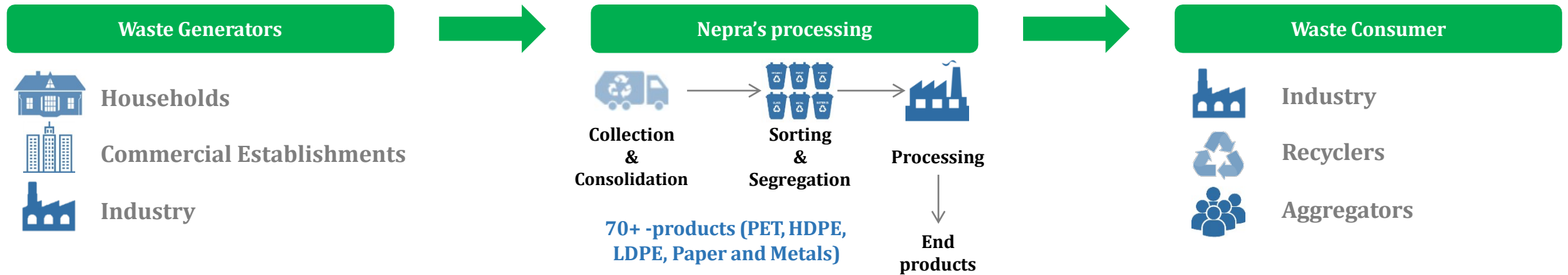
NEPRA is a unique proposition in the Indian Waste Management Context



The Current Dry Waste Value Chain is highly unorganized and inefficient

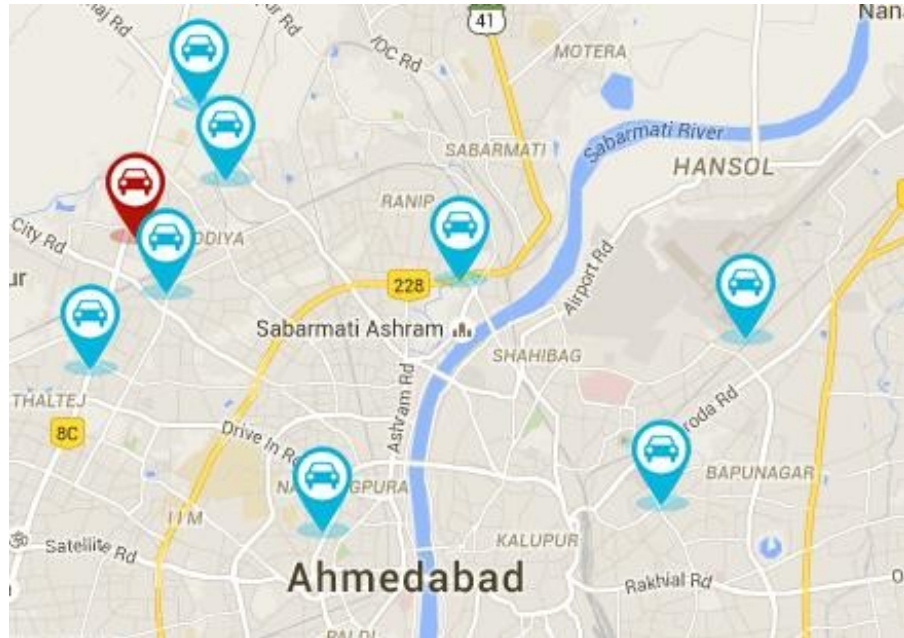


NEPRA - Successfully Organizing the Value Chain to Enhance Efficiency



Directly Linking Waste Generators to Recyclers - Eliminating Inefficient Intermediation

Real Time Monitoring



Helps NEPRA monitor the location of collection agents, waste collector and scheduled pickup calls in real time

Android Application



Local Language Application

Customized ERP Solution

Group	Particular	Weight(%)	Gross Qty	Inert(%)	Net Qty	Purchase@	Purchase Amt
Corporate Waste	Magazines Waste - Regular	0.00%	2.60	0%	2.60	7.00	18.20
Corporate Waste	RDF - non-recyclable	4.84%	4250.00	0%	4250.00	-0.01	-42.50
Corporate Waste	Corporate Waste - Bottom Mix	3.96%	3592.43	3.28%	3474.66	3.37	11698.14
Corporate Waste	CW Disposal - FREWAS	39.42%	34840.49	0.64%	34617.60	0.01	344.57
Glass	Glass Waste - PS	1.14%	1000.10	0.00%	1000.09	1.98	1980.09
Metal	Oil Tin / Dabbo - Undamaged	0.03%	25.00	0%	25.00	14.44	361.00
Metal	Iron Waste Patra - Regular	0.30%	264.00	0%	264.00	13.00	3432.00
Metal	Brass Waste - Pital	1.94%	1700.00	0%	1700.00	25.17	42789.00
Paper	Newspaper Waste - Regular	0.04%	38.90	3.50%	37.54	9.40	352.83
Paper	Cardboard Waste - REGULAR	15.43%	13577.20	0.16%	13555.20	8.58	116251.69
Paper	White A4 Paper - Regular	0.16%	147.45	3.63%	142.10	5.48	779.00
Paper	Duplex - Regular	0.53%	819.18	9.72%	468.74	5.98	2801.78
Plastic	No 1 Pet Bottle - Waste	1.17%	1207.90	14.98%	1026.90	27.69	28439.40
Plastic	Mixed Milk/water Pouches - Dirty	3.50%	3125.69	1.58%	3076.21	3.95	12163.86
Plastic	Ramakda / Plastic - Rigid	6.21%	5590.53	2.44%	5453.85	10.91	59505.26
Plastic	Plastic Can 5 Ltr - Regular	0.01%	10.00	0%	10.00	5.00	50.00
Plastic	Plastic Can 15 Ltr - Regular	0.00%	1.00	0%	1.00	10.00	10.00
Plastic	Mixed Roadside Plastic Film - Dirty	0.34%	336.55	10.76%	300.33	5.75	1726.31
Plastic	Mixed Rafia Waste - bags	3.49%	3119.30	1.66%	3067.65	10.88	33366.60
Plastic	Black Rigid Plastic - Regular	0.22%	213.50	11.18%	189.63	4.00	758.52
Plastic	Plastic - Industrial	1.16%	1020.00	0%	1020.00	30.00	30600.00
Plastic	Dull LDPE - Regular	0.22%	219.18	12.55%	191.67	15.00	2874.99
Plastic	Colour mix roadside plastic - dirty	0.29%	286.20	11.89%	252.18	6.00	1513.08

Real-time information of the collection-mix to enable operations and sales planning

Key Features

Email/SMS notifications for transparency

Real time sync with server

Key in weight of materials to know exact payments

Easy to use due to images of waste materials

Standard predefined pricing

Available in Local Language & English



NEPRA

A glimpse of NEPRA's State-of-the-art Material Recovery Facilities (MRF)

NEPRA's MRF use state-of-the-art technologies like Optical Sorting enabling it to sort and segregate waste at scale

Ahmedabad – 100 TPD)



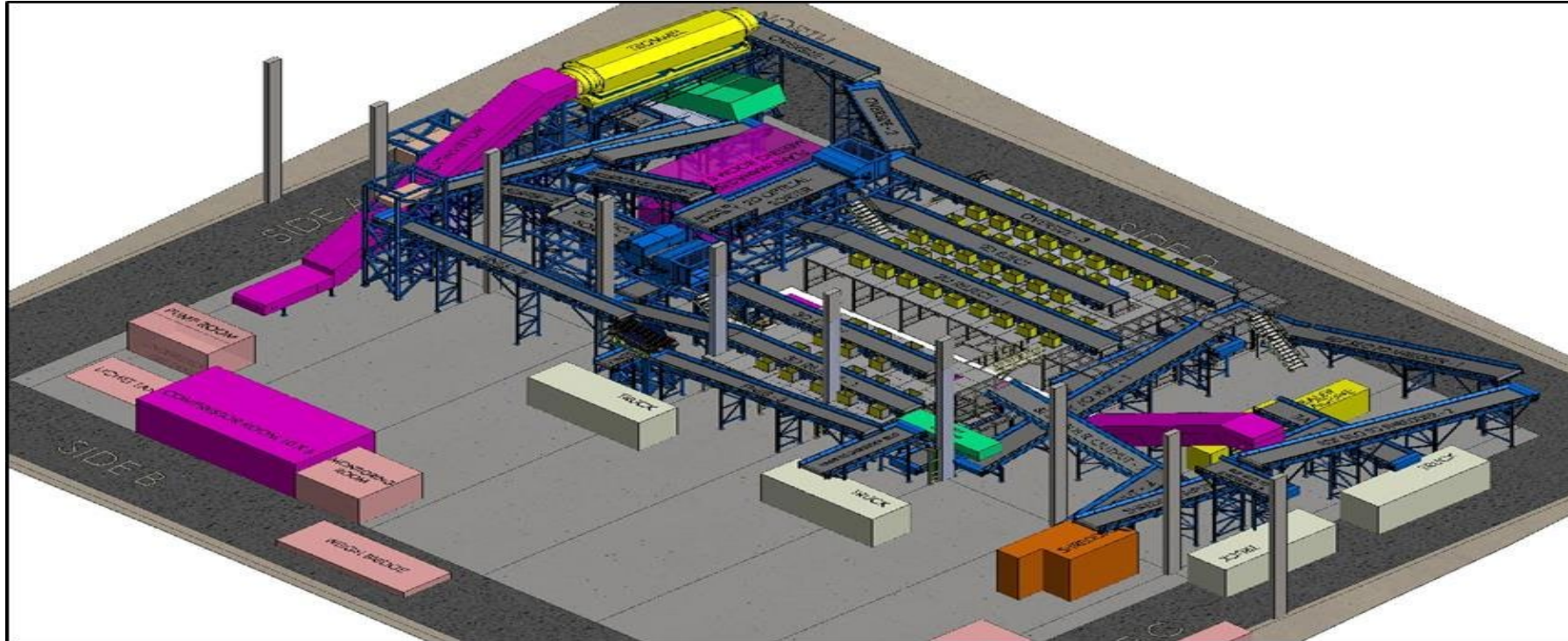
Indore 300 TPD



Work ongoing for Jamnagar, Pune, Bhopal, Ahmedabad unit 3 and Mumbai plants,

Project Team - Developments & Learnings

- **Capable in developing MRF's – In House**



- Established & Growing team of designers, engineers (civil, mechanical, electric), supervisors, fitters / welders who have now have gained experience of erecting and commissioning of various MRF's with us.
- **MRF is completely conceptualized & designed by our in house team of designers.**

Project Team - Developments & Learnings

- Constantly analyzing and improving quality, execution of work using modern technology for erection & commissioning

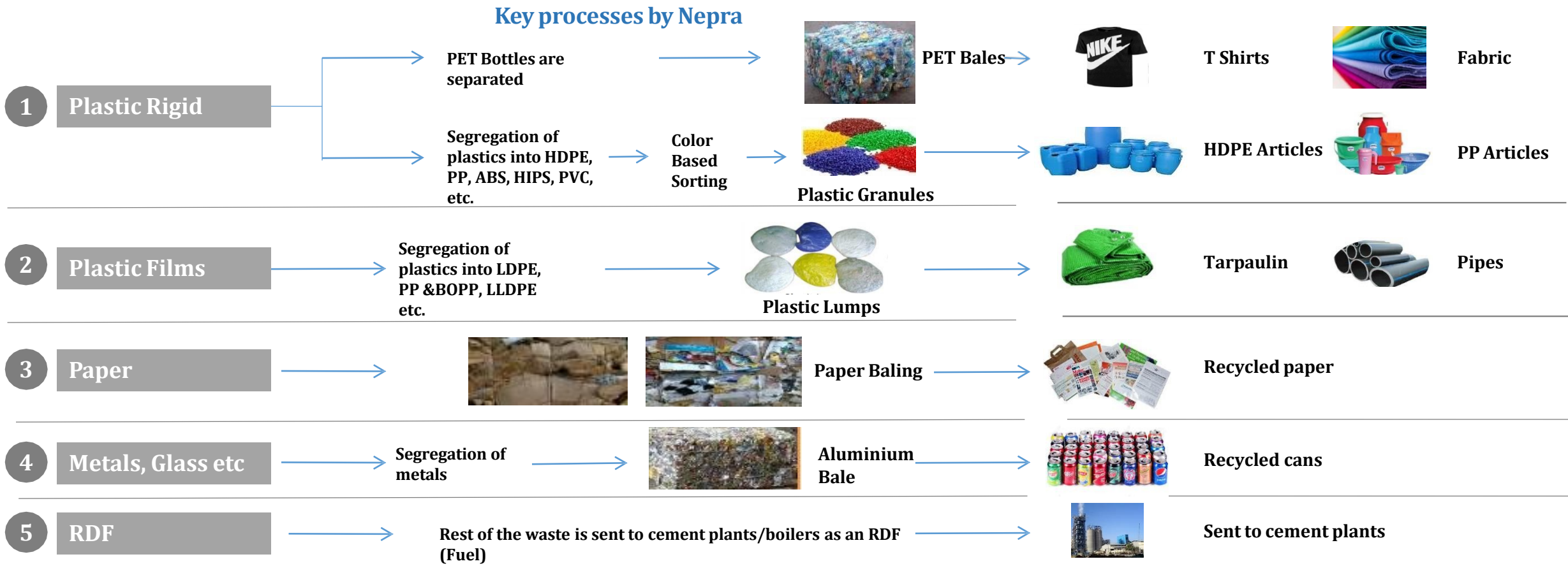


With a wide array of products recovered from waste;
NEPRA is India's leading "zero waste to landfill" company

Product profile of Nepra - Key Products

End use

Key processes by Nepra



Sorting Solutions for Scale at Economical Costs



Sort with Volume and Purity



www.ishitva.in info@ishitva.in

November 2019

NEPRA's founder Sandeep Patel is an investor in IRS, whose technology is used in its operations.

The technology is used for segregation and sorting, replacing the need of manual labour. Hence, ensuring safety and better hygiene of the labourers. At the same time increasing efficiency and scale of the process.



We **SORT** to Create **VALUE**



ISHITVA Robotic Systems Private Limited
Artificial Intelligence, Machine Learning and IoT



2021, Winner Wharton India Startup Challenge



2020, Winner Global waste-tech startup challenge



2019, Nasscom Winner Environment Tech4 Good



PLUGANDPLAY

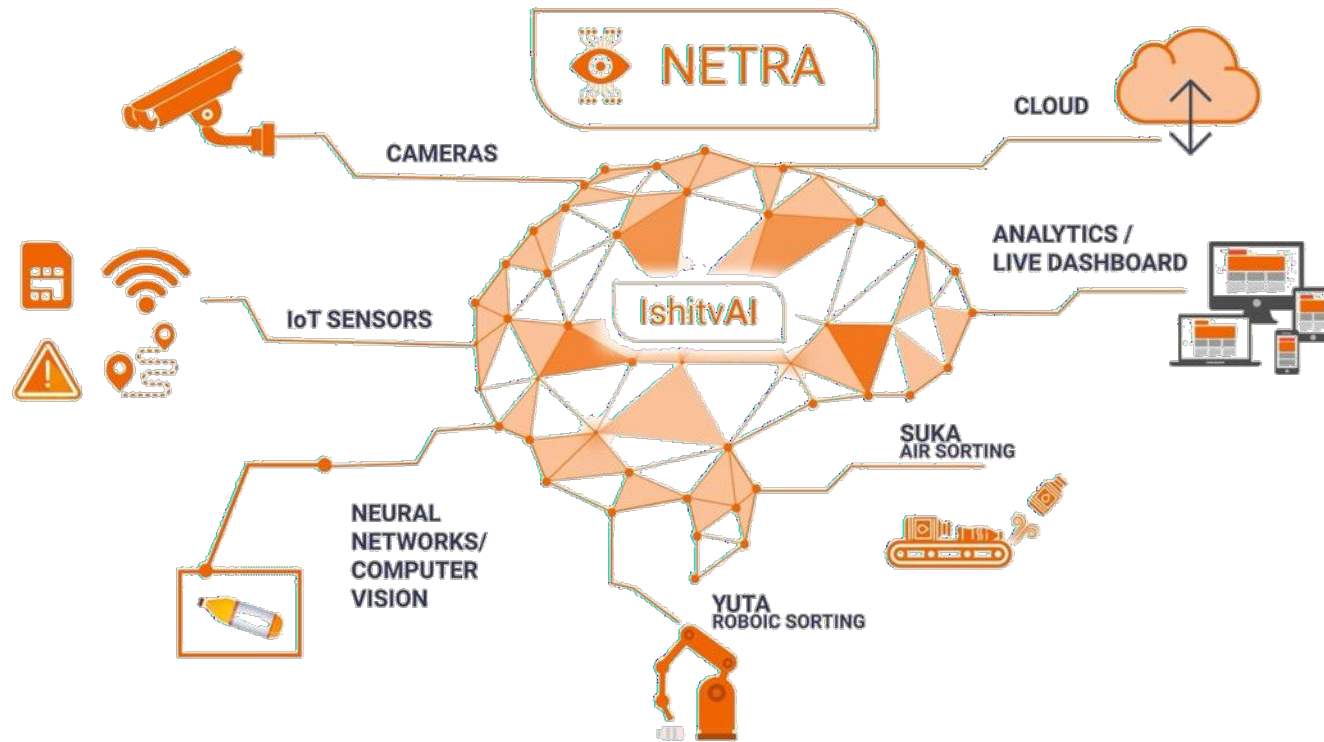


Contact us:

sandip@ishitva.in
info@ishitva.in

Ishitva¹
Designs & Builds
Automated Solutions
for SORTING of DRY WASTE using
Artificial Intelligence, Machine Learning and IoT.

¹ Meaning of **Ishitva** (Sanskrit word) – Divine Power / Super Natural Power to rule over all the Human being / Things



AI powered waste recognition tool for **monitoring, auditing and sorting**

Empowering MRF operators with **real time analytics and actionable insights**

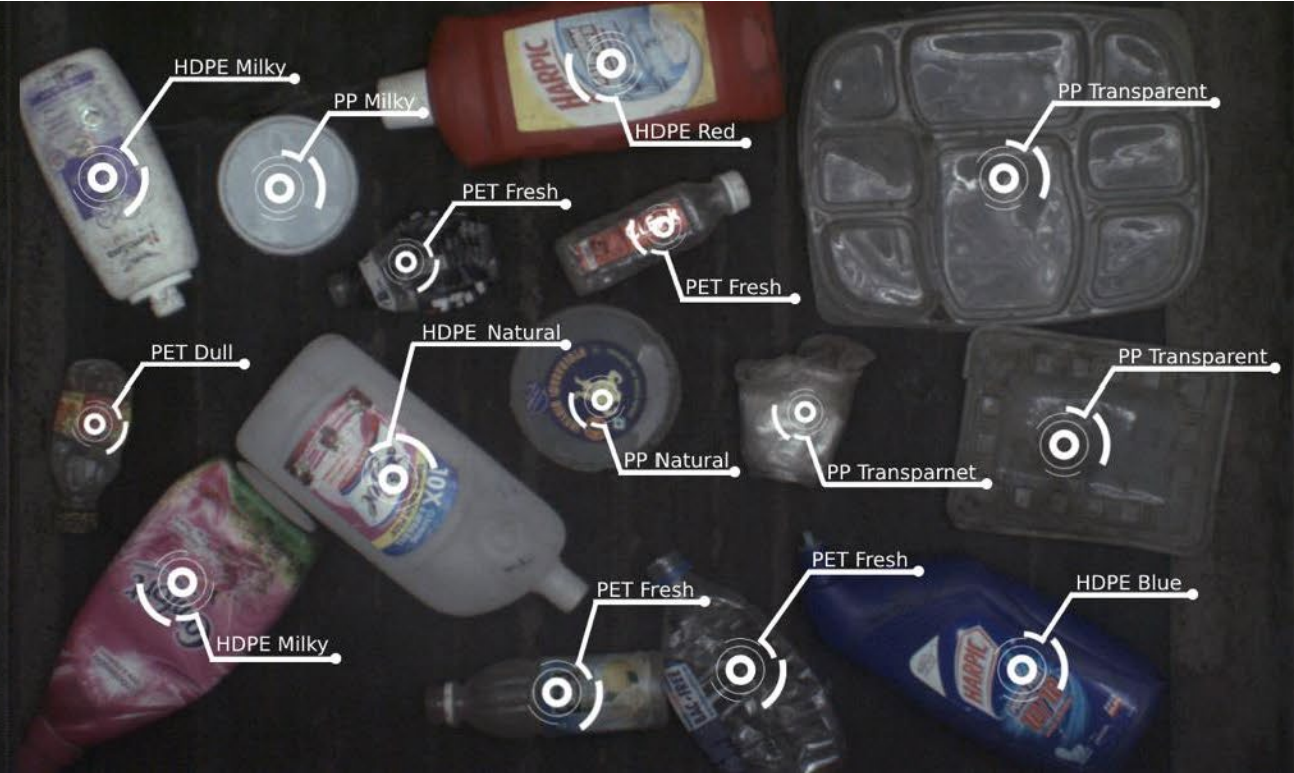
Ability to capture information from a very high speed conveyor belt

Easy **Retrofit in existing MRF** setup

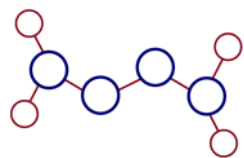
*NETRA[®] Machine Vision provides sorting instructions using
ishitvaAI[®] algorithm to SUKA[®] and YUTA[®]*



How Humans See on Conveyor



NETRA using Neural Networks



Polymer



Shape & Size



Color



Multi-layered



Flexibles

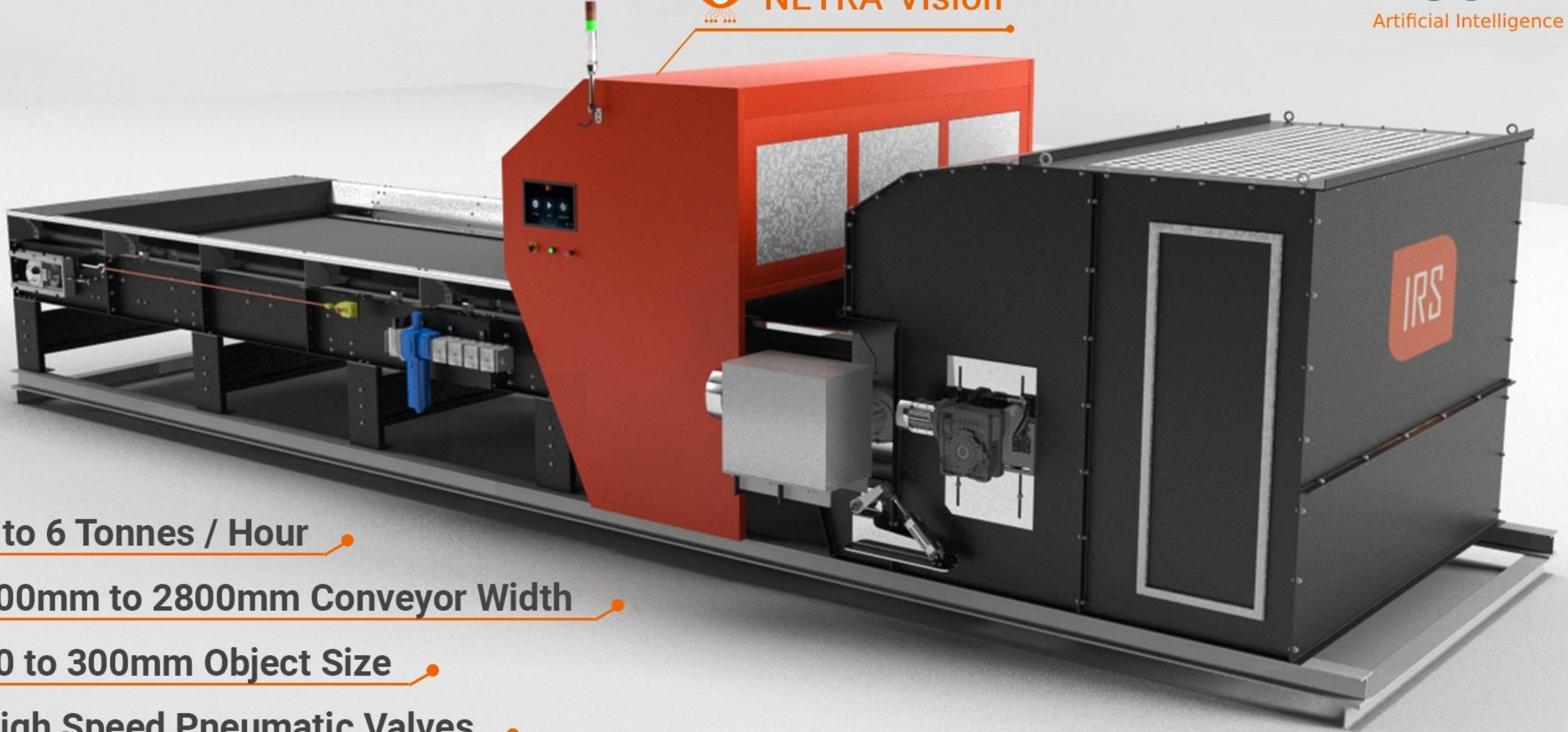


Brand



NETRA™ Vision

SUKA®
Artificial Intelligence



1 to 6 Tonnes / Hour

800mm to 2800mm Conveyor Width

30 to 300mm Object Size

High Speed Pneumatic Valves

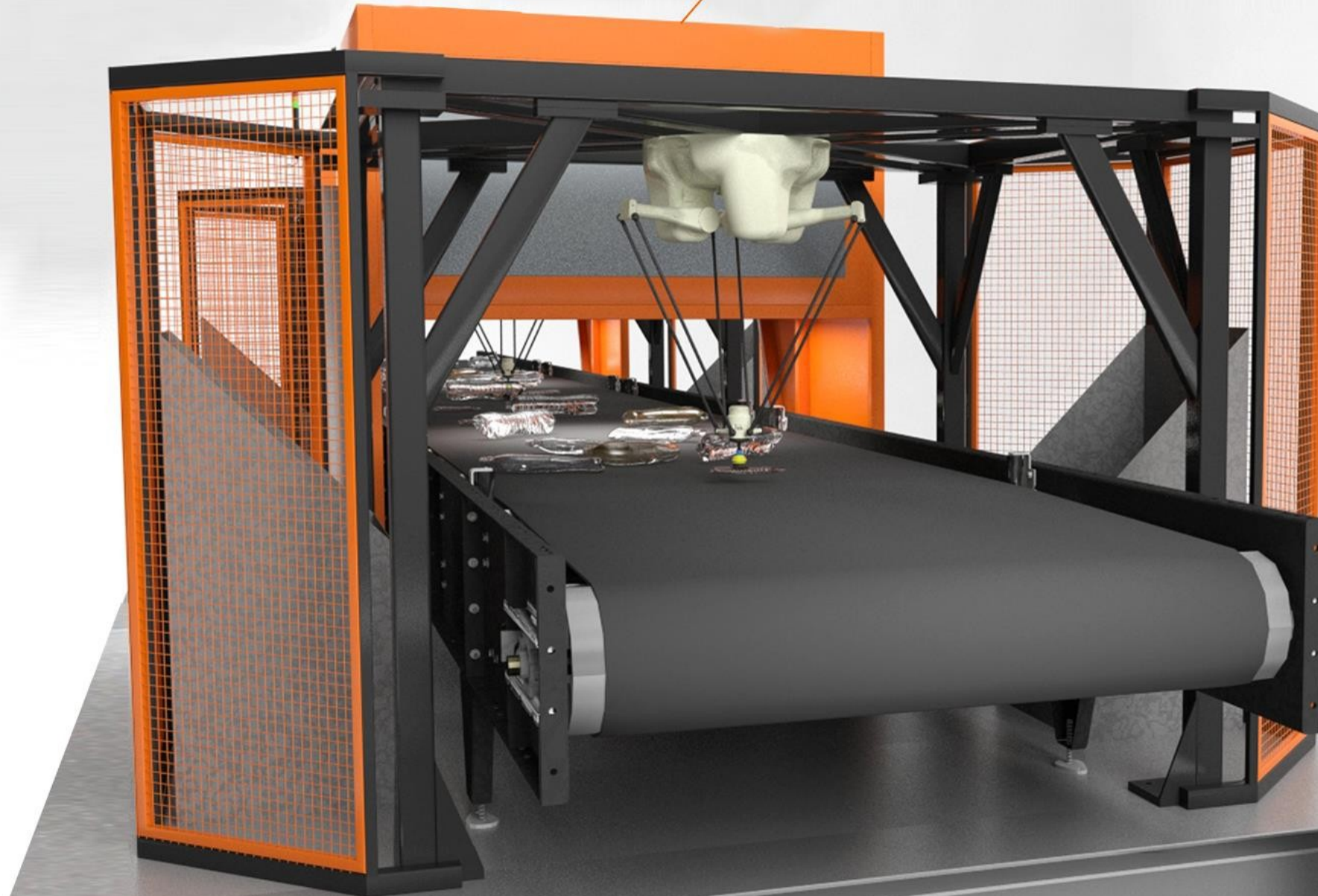
www.ishitva.in



NETRA™ Vision

YUTA™

AI powered Robotic Sorting



- **5000 Picks/Hour**
- **90% Efficiency**
- **5.5Kg Payload**
- **24 Hour/day**
- **Customized Gripper**

www.ishitva.in

MICRO MSW
OPERATION



FLEXIBLES &
MLP



PET
AGGREGATOR
& RECYCLERS



BIOME
WASTE



SMALL MSW
OPERATION



MIXED PAPER



MIXED
PLASTICS



SHOES
WASTE





Top 10 AI Startups in India

bisinfotech.com • 5 min read





We **SORT** to Create **VALUE**



ISHITVA Robotic Systems Private Limited
Artificial Intelligence, Machine Learning and IoT



2021, Winner Wharton India Startup Challenge



2020, Winner Global waste-tech startup challenge



2019, Nasscom Winner Environment Tech4 Good



PLUGANDPLAY



Contact us:

sandip@ishitva.in
info@ishitva.in

Compounding Plastic to make new products



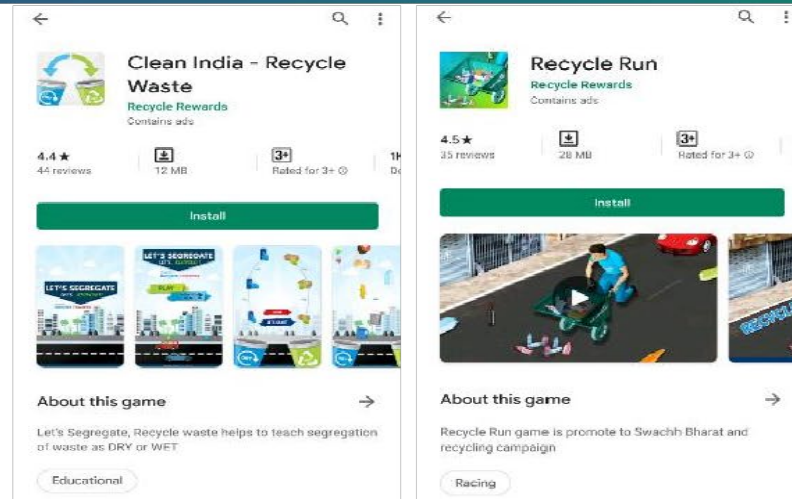
NRMPL has also tied up with different recyclers and industries to which it sells its processed plastic and other dry waste material to be used as raw materials to make new products.



A few glimpses of our activities are as follows:



Our on-field research and Waste Picker Integration has helped develop an inclusive platform for the waste management sector.



Games designed that teaches importance and techniques of segregation in a fun manner.



Waste Pickers Awareness Programs



Mass Awareness Campaigns at the Household Level



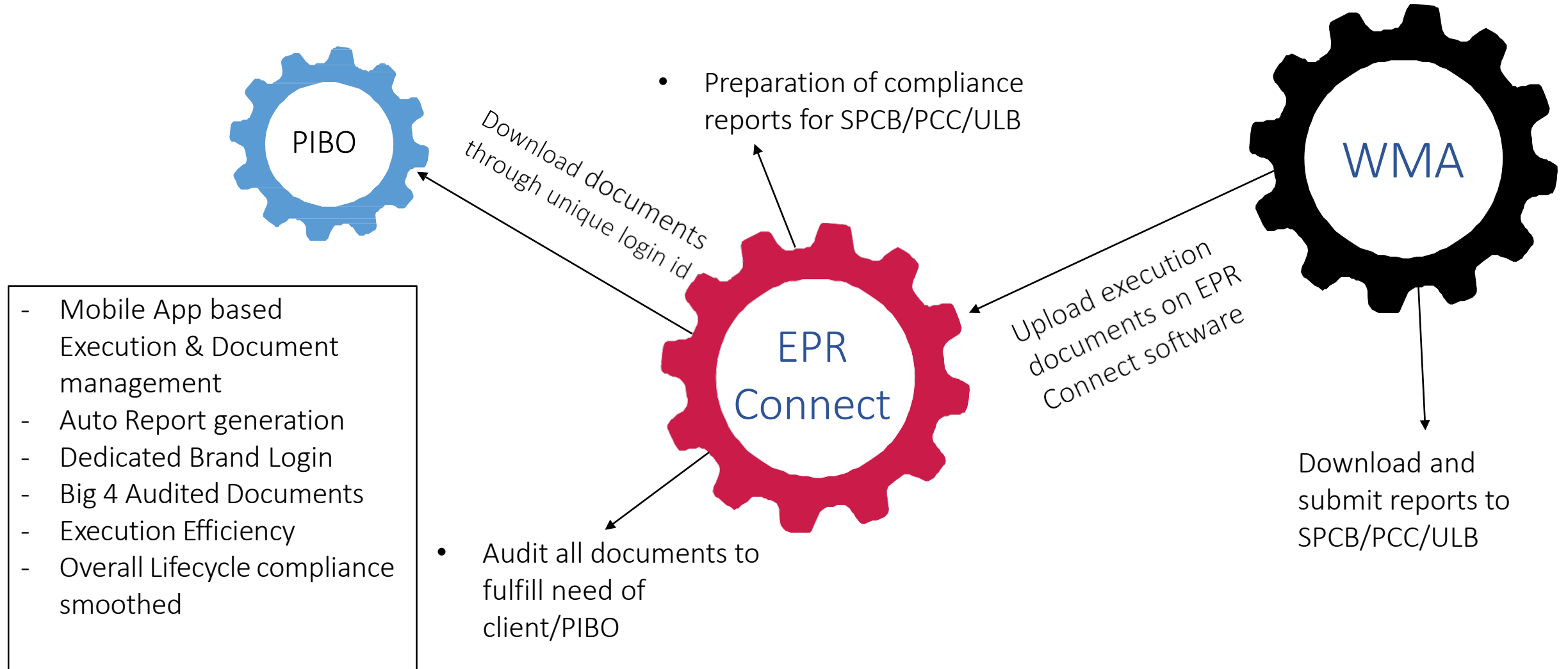
Awareness Activities and sessions with Municipal Bodies



Number of Dry Waste Management Education Initiative conducted in 2019

Name of the state/ Union Territory	Number of School/universities
1. Maharashtra	52
2. West Bengal	24
3. Gujarat	20
4. Uttar Pradesh	7
5. Karnataka	5
6. Delhi (NCR)	3
7. Rajasthan	3
8. Madhya Pradesh	2
Total number of schools/ Universities	116

EPR CONNECT Platform



PARTNERS



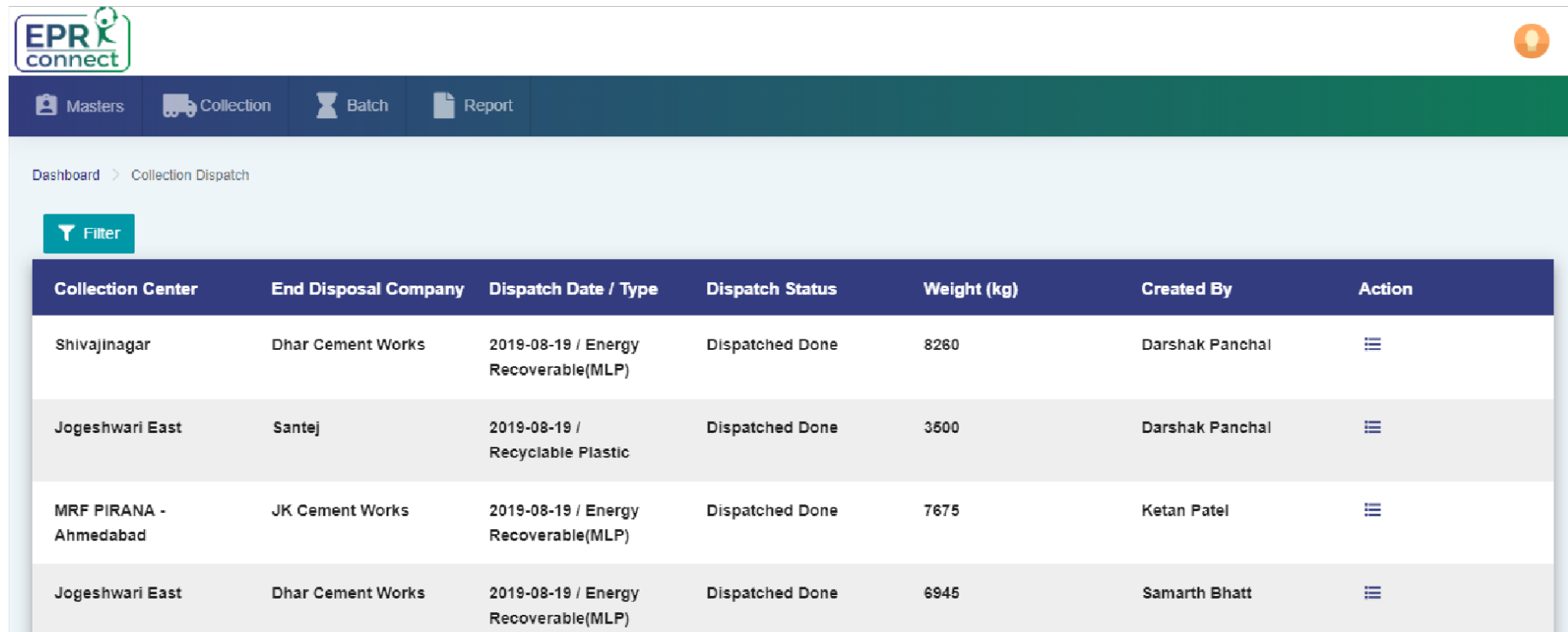
EPR Connect & EPR Trac.

EPR Connect – Advisory:





- Help companies comply to PWM Rules, 2016 & amendment of 2018.
- EPR Calculator for accurate liability calculation.

EPR Trac.:

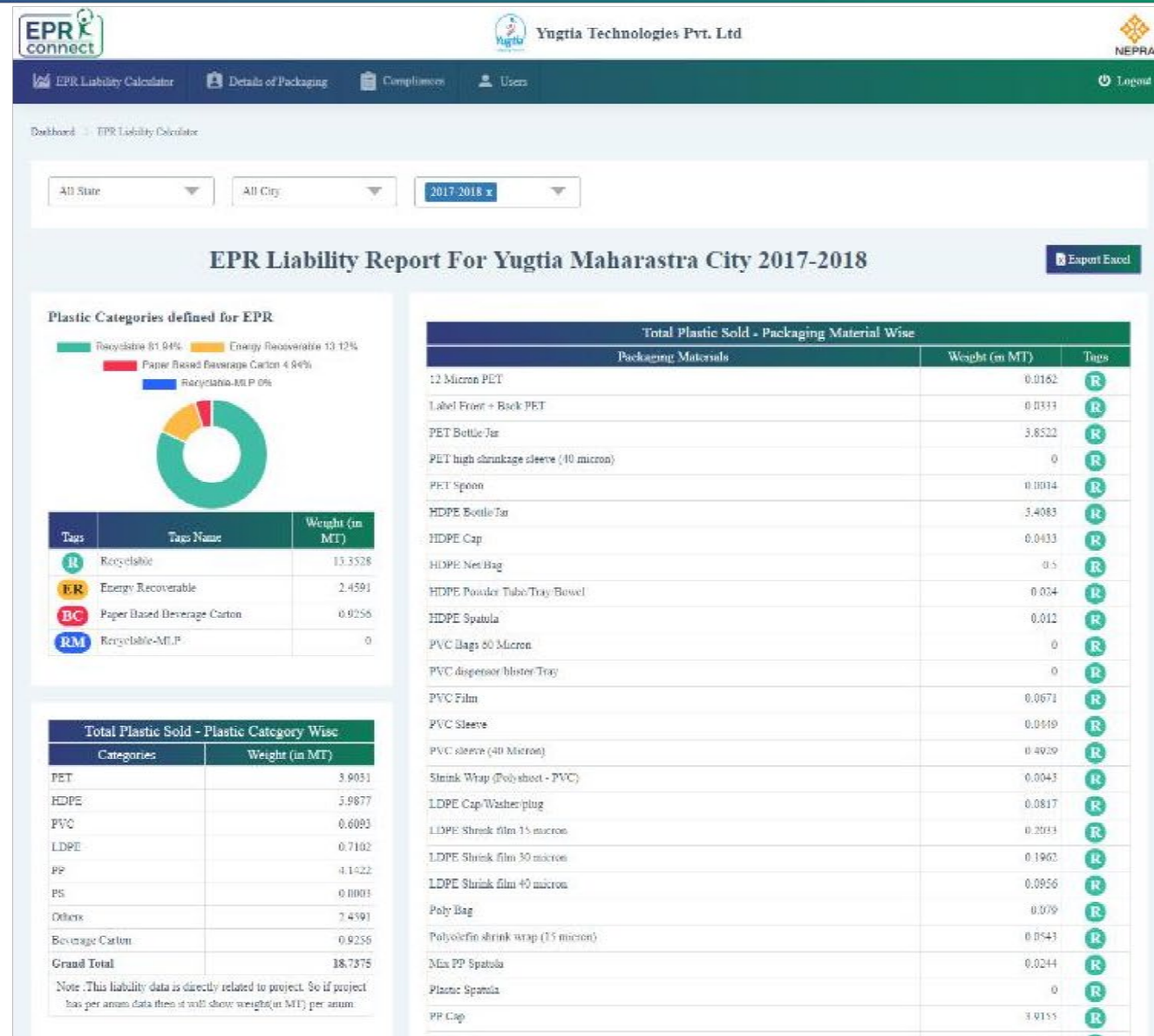
- Help companies collect post-consumer plastic waste at scale.
- Developed software for transparency & traceability.



The screenshot shows the EPR Trac web application interface. At the top, there is a navigation bar with the EPR connect logo and a lightbulb icon. Below the navigation bar, there are tabs for Masters, Collection, Batch, and Report. The main content area displays a breadcrumb trail: Dashboard > Collection Dispatch. A Filter button is visible on the left. The main table lists collection dispatch records with columns: Collection Center, End Disposal Company, Dispatch Date / Type, Dispatch Status, Weight (kg), Created By, and Action.

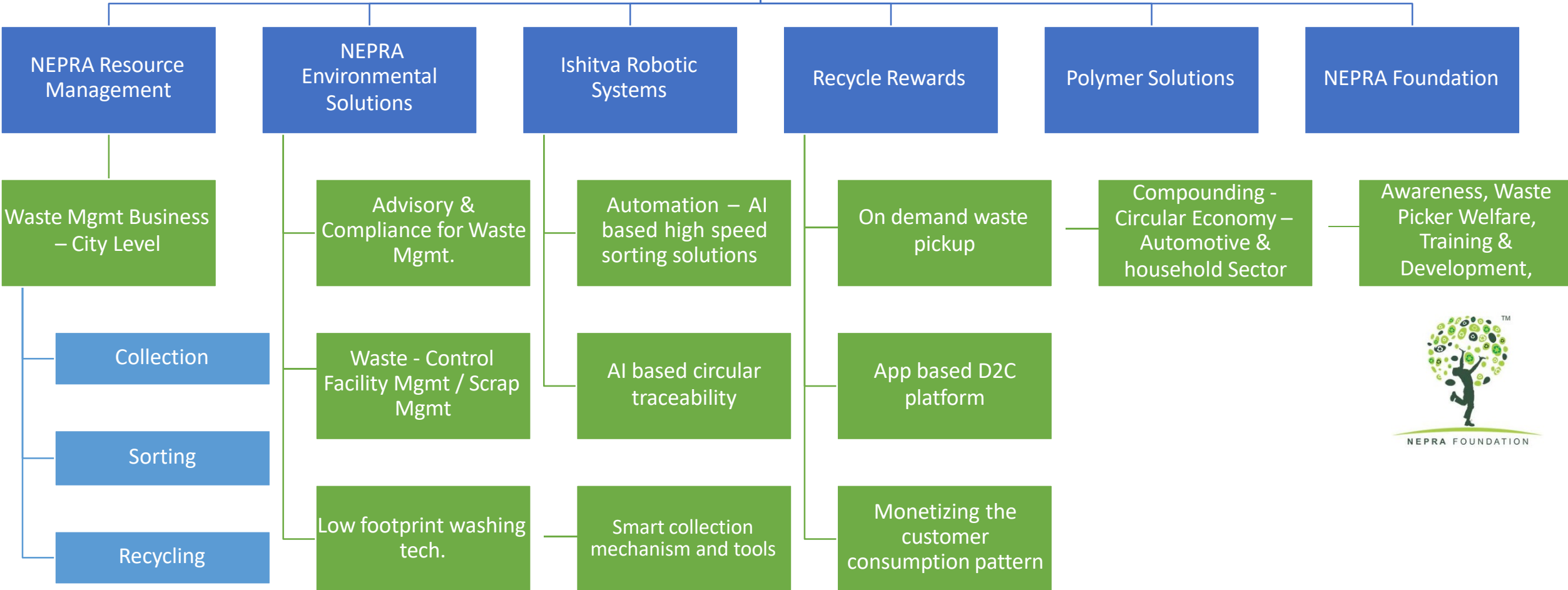
Collection Center	End Disposal Company	Dispatch Date / Type	Dispatch Status	Weight (kg)	Created By	Action
Shivajinagar	Dhar Cement Works	2019-08-19 / Energy Recoverable(MLP)	Dispatched Done	8260	Darshak Panchal	
Jogeshwari East	Santej	2019-08-19 / Recyclable Plastic	Dispatched Done	3500	Darshak Panchal	
MRF PIRANA - Ahmedabad	JK Cement Works	2019-08-19 / Energy Recoverable(MLP)	Dispatched Done	7675	Ketan Patel	
Jogeshwari East	Dhar Cement Works	2019-08-19 / Energy Recoverable(MLP)	Dispatched Done	6945	Samarth Bhatt	

EPR Connect & EPR Trac.





NEPRA Eco-system





NEPRA



Winner of :-
Entrepreneur With
Social Impact



“Anyone who is ideating, creating this plant or collecting waste, comes under the category of a Swachh Bharat entrepreneur.”

SANDEEP PATEL, CEO, NEPRA RESOURCE MANAGEMENT PRIVATE LIMITED



DECEMBER 6, 2019 • FORBES INDIA



NEPRA



Winner - MRAI Recycling Crusader
Award- 2020



Winner - Garbage Guru under Safaigiri Awards 2019



NEPRA Resource Management Pvt. Ltd. (NRMPL)